



Environmental Institute *News & Events*



Contact: Jamie Reeger

Phone: 570-226-4625 ext. 2607

Email: reegerj@lackawanna.edu

Website: www.lackawanna.edu

Ecological Sustainability Degree @ Lackawanna College

The Ecological Sustainability Career Plan is a new progressive and innovative degree designed to educate students to become ecologically literate with the capacity to excel in the new "green collar" job market. This degree is experiential, with many classes taking place in the field with local experts. Students will become literate in real world sustainability challenges and engage in the solutions. This degree helps students to understand the global issue, their place in the world and focuses their passion to become effective citizens in their community and in the world. Graduates will obtain an Associates of Arts (AA) degree in Ecological Sustainability and may enter the workforce in various entry level positions or transfer to a four-year institution.



Evergreen Wreath Making

Dec. 3, 10:00 a.m. to noon



Evergreen wreaths smell wonderful and add charm to your winter decorating scheme. Join artist Sally Robertson to learn how to create your own unique wreath with natural materials. Plus, bring in your favorite ribbon and learn techniques for tying the perfect bow!

Environmental Film Series:

Home Place: Going Home

Dec. 7, 6:00 p.m. to 7:00 p.m.

Home Place is a probing film series which explores the relationship between humans and the environment. Part four of this series explores how technology has cut us off from Earth and created insensitivity towards nature and a decline in our health and well being. Going home offers personal remedies which help us to reconnect with Earth. Film times are 30 minutes followed by a guided discussion. Popcorn & light refreshments will be provided. Films are free. Pre-registration is required.

Lackawanna College Art Show

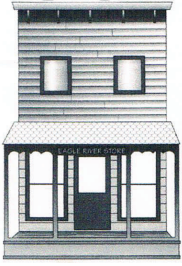
On view through Dec. 7

Stop by to enjoy the first-ever Lackawanna College, student, faculty and staff art exhibit. All artwork is inspired by nature, the environment, has a sustainability theme or uses recycled materials. Artwork includes painting, photography and polaroid transfers. Some artwork will be available for purchase. Refreshments will be served. Mixed media art exhibit featuring LC student, faculty & staff. All artwork is inspired by nature, the environment, has a sustainability theme or uses recycled materials.



10 Moffat Drive, Covington Twp., PA
Call 842-1506 for more information

COVINGTON TOWNSHIP BUSINESS



These businesses have recently opened within the township. We encourage/lage supporting your local businesses.

- ◆ North East Discount - opened on Route 435
- ◆ Semian Real Estate Group - opened on Route 502
- ◆ Stanton Family Restaurant - closed on Route 435
- ◆ State Farm Insurance - opened in Bill's Plaza

Residential Energy Use Expected to Decrease ~ PP&L Expected to Expand its Power Output

According to the Electric Power Research Institute, funded by the utility industry, residential demand for electricity is expected to decline

by .5% per year over the next 10 years. From 1980 to 2000 residential power demand grew by 2.5% a year and slowed to 2% from 2000 to 2010. The expected decline in future utility power usage is primarily a result of:

- (1) more efficient lighting and electric devices
- (2) new homes being built to use less energy
- (3) the tough economy and weak housing market

Interestingly, at the same time, PP&L is proposing to expand its energy output significantly and in the process build a 230 kilovolt line through a portion of Covington Township. The proposed power line will be placed on 180 foot poles and is expected to cut across Route 435 in the vicinity of the Covington Industrial Park. It will then skirt the Industrial Park and Eagle Lake on the north and west side (closer to the intersection of Routes 435 and 307) and then connect to a new substation in the Freytown area of Covington. From there, it will run to Honesdale and ultimately, New Jersey. PP&L claims the new line and three new substations will strengthen the electric delivery system and improve the reliability of service for homes and businesses in the region.



The Year Without a Summer

Mount Tambora, a volcano in the Dutch East Indies, blew up in 1815, sending a cloud of dust, ash and cinders into the upper atmosphere. As a result, snow fell on the northeastern United States throughout the summer of 1816, killing newly planted crops and dooming the region to a winter of hunger and a desperate spring. May

had been cold, but a warm spell in early June encouraged farmers to plant. Then a bitter wind arose, and on June 6 and 7 snow fell, drifting 20 inches in Danville, Vermont. In July and August, lake and river ice were observed as far south as Pennsylvania. A heavy freeze on August 29 killed what corn had survived, notably in parts of Pennsylvania where the buckwheat crop was destroyed as well. Four weeks of good weather encouraged replanting, but by July 4 another cold wave wiped out corn, beans and squash. Farmers burned their hay to try to save their corn. Again warmth returned, and again farmers replanted. And on August 21 snow fell that would last all winter. Over the next year, farming families left their land in record numbers to move south or to work in factories and on the Erie Canal. ~ from Readers Digest -Strange Stories, Amazing Facts of Americas Past

North Pocono

Cultural Society

(former producer of the Moscow Country Fair) is actively looking to revive its membership & its mission to provide cultural & artistic events in the North Pocono area. The group sponsored the very successful Harmonic Brass Concert in September & expects to carry on the concert series begun by *Mondays in Moscow* for 2012. The fall months have seen the institution of an Artisans & Farmers Market at the Penn Security Bank parking lot. This event will resume in the early spring. The list of activities continues to grow with support from local artists and community members. Ongoing art exhibits are held at the Cabin Café & Moscow Clayworks. Interested artists/musicians are encouraged to add their names to the group's artist registry. All are welcome to attend the meetings held on the 2nd Monday of each month at the Moscow Borough Building. For more information contact Frank Goryl at 848-1245
moscowclayworks@gmail.com

CHECKMATE HAIR DESIGN

A Full Service Family Salon

Chris & Marilyn invite new customers to "make the right move".

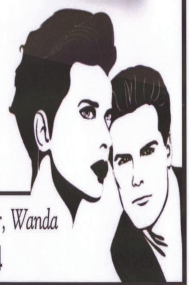
Check out our web ad on moscowvillager.com

Come to Checkmate Hair Design.

CHECK US OUT FOR WEEKLY SPECIALS

For Appts. Phone (570)842-2266 Proprietor, Wanda
Corner 502 & 307 Daleville, PA 18444

Make
The Right
Move!



JOHN J. BROSTOSKI, JR.

CERTIFIED PUBLIC ACCOUNTANT

TAX SERVICES
570-499-7148

30 Daleville Highway
ROUTE 502
MOSCOW, PA 18444

johnbrostositates@gmail.com

